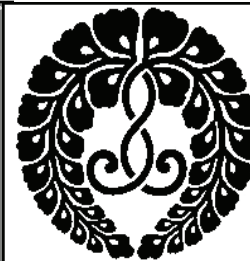


# JIKO-"Wisdom-Light"

October 2019

Volume 64, Issue 10



Monthly Newsletter of the Aiea Hongwanji Mission Embrace Change - Transformation (Walk in Peace)

## **NEED THE ASSISTANCE OF THE MINISTER?**

**Please call Rev. Shawn Yagi at 488-5685 (residence), or 487-2626 (office). If he is not available, leave a message on the answering machine.**

**For religious emergencies (Makuragyo or bedside services), please call Rev. Yagi on his cell phone, 364-2825.**

**Temple President, Warren Tamamoto, is also available for assistance. His pager number is 576-4136.**

**Aiea Hongwanji Mission,  
99-186 Puakala St,  
Aiea 96701  
PH: 487-2626  
Email:  
[aieajiko@gmail.com](mailto:aieajiko@gmail.com)  
Website:  
[aieahongwanji.org](http://aieahongwanji.org)**

## **Minister's Message.**

The Harvest moon took place on September 13<sup>th</sup> of this year. It is the same day that I am composing this month's JIKO message. On this day, the height of the moon is neither too high nor too low, and the atmosphere is cleaner than at any other month. This explains why we happen to see the most beautiful moon of the year.

The "harvest moon" is the full moon nearest the Autumnal Equinox (22 or 23 September), occurring anytime within two weeks before or after that date. The September Equinox coincides with many cultural events, religious observances, and customs around the world. The Chinese Mid-Autumn Festival, for example is also known as the Moon Festival. This festival is also celebrated in Vietnam, Taiwan, and Hong Kong. Here in the United States, Harvest Moon festivals are celebrated with abundant crop yields on sale at farmers markets, beer and wine tasting, craft fairs, and a variety of entertainment and concerts.

In Japan, moon viewing events, take place on the night of the full moon. The beauty of the moon has long inspired people from long ago to become poets and thinkers. Today, many stories, fables, and myths abound about the moon.

There are commonalities of myths of the moon god or goddess. In most myths, the moon is paired with the sun. For example, in a Chinese myth about the beginning of the world, the left eye of the creator God became the moon and his right eye became the sun. Japan also has a similar myth. Representations of the sun and moon are also found in Greek myths. For example, the sun god Apollo, and the moon goddess Artemis, are twins.

In ancient times, people imagined someone drew a picture on the moon's surface. People in Japan saw a rabbit pounding mochi. In Korea, they saw a rabbit is pounding medicinal herbs; in China, some say there's a picture of a rabbit, while others say it is a picture of a crab; in Northern Europe, people see a figure of a granny reading a book; in Eastern Europe, they see a woman's profile; in Arabia, a roaring lion. Presumably, there are many interesting stories surrounding each culture related to the face of the moon.

Buddhism also has stories of the moon. One story related to Jodo Shinshu Buddhism is "Samadhi of Moon-Radiant Love." It is written in Shinran Shonin's major work, Kyogyoshinsho.

"The light of the moon causes all the blue lotuses to unfold in brilliant luminosity. Such is the Samadhi of moon-radiant love, which causes sentient beings to open forth the good mind..... The light of the moon brings joy to the hearts of all travelers on the road. Such is the Samadhi of moon-radiant love, which brings joy to the hearts of those in practice on the path of Nirvana. This is why it is called the Samadhi of moon-radiant love. (CWS p134)"

It is a quotation from Nirvana Sutra. Shakyamuni Buddha went into the Samadhi of moon-radiant love in order to save a sick king (King Ajatashutru\*). When the king



*(Continued on page 2)*

(Continued from page 1)

killed his father, he became mentally ill and it brought about physical sickness. Shakyamuni Buddha wanted to cure the king, so he entered into a deep meditation called “Samadhi of moon-radiant love.” While he was in deep meditation, he emitted the light that cured the king’s illness. Even the people who commit grave offenses can be saved by the Buddha. The Buddha’s unconditional love is like the light of the moon that softly envelopes all beings.

\*King Ajatashutru is a person who was deeply involved in early Buddhism with his father, Bimbisara, as King Magada during the life of Shakyamuni. According to a Buddhist scripture, his father, Bimbisara, was old and prayed to the god who was worried about having no children. A master once told that a hermit who lived in Mt. Vipura would die soon and will be reborn as a prince. King Bimbisara was unable to wait for this and killed a hermit. Soon Queen became pregnant. Before Ajatashutru was born, he already had a sense of grudge. When he was born, a Diviner told that Ajatashutru would destroy his father, so King Bimbisara began to believe this and threw his child off the tower, but baby Ajatashutru only broke a finger and did not die.

Ajatashutru, who had grown up, was tempted by Devadatta, who rebelled against Buddha and formed a new cult, and imprisoned Bimbisara with Devadatta’s word. During a visitation, his mother had hidden honey to give the king, but was caught and was also imprisoned. Meanwhile, his father eventually died of starvation, however, Ajatashutru repented for his crime and felt severe headaches. At the recommendation of the Prime Minister, who was also a Doctor, Jivaka, these headaches were reportedly reduced after consulting Buddha and he began to support Buddhism and the Sanghas.

Namo Amida Butsu Rev. Shawn K Yagi

### EVENTS OF OCTOBER 2019

3	Thu	9:00am	Aiea BWA meeting
6	Sun	9:00am	Family Service
		1:00pm	Oahu United Jr. YBA Mtg at Wahiawa Hongwanji
7	Mon	7:30pm	Sr. YBA meeting
11-13	Fri-Sun		Minister’s Lay Assistant Retreat (BSC)
13	Sun	9:00am	Family Service
14	Mon		Discoverer’s Day (Preschool/Lotus Closed)
15	Tue	7:00pm	Aiea Hongwanji Mission Board of Directors’ Meeting
20	Sun	9:00am	Family Service
26	Sat	5:00pm	Hawaiian Dinner
27	Sun	9:00am	Family Service

### HIGHLIGHTS OF NOVEMBER 2019

2	Sat	9-2 pm	Nembutsu Gathering at Aiea Hongwanji
3	Sun	9:00am	Family Service
		11:30am	Oahu United Jr. YBA Mtg at Waipahu Hongwanji
7	Thur	9:00am	Aiea BWA meeting
10	Sun	9:00am	Family Service
11	Mon		Veterans Day HOLIDAY (Preschool/Lotus closed)
14-15	Thur-Fri		State Ministers’ Continuing Education Seminar
15	Fri	5:30pm	14th Annual Lighting Our Way Banquet at Waiialae Country Club to Honor Dr. Warren and Claire Tamamoto
17	Sun	9:00am	Family Service
19	Tue	7:00pm	Aiea Hongwanji Mission Board of Directors’ Meeting
24	Sun	9:00am	Sangha Memorial Service (Eitaikyo)
28	Thur		Thanksgiving HOLIDAY (Preschool/Lotus closed)
29	Fri		Hawaii Kyodan Family day (Preschool closed)

**If you are homebound, in a care home or in the hospital, and would like me to visit, please call me, Reverend Yagi at 488-5685 to make arrangements.**

## PRESIDENT'S MESSAGE

Hi everyone,

I hope you are well. We enjoyed our two short “vacation” trips to San Francisco and the Big Island to attend Buddhist conventions. On Labor Day weekend, we attended the **16<sup>th</sup> World Buddhist Women’s Convention** held at the San Francisco Marriott Marquis hotel in San Francisco. The theme of the conference was “Live the Nembutsu”. There were about 1700 participants from Japan, Canada, South America and the USA present. Men were invited to participate in the conference activities and many did, myself included. The hotel was perfectly suited for the size of the conference with all activities held within the hotel. Trader Joes was just across the street and most of the Hawaii people did some of their shopping there.



Friday, the first day of the conference was a variety of workshops held in the hotel conference facilities on the ground floor. Some of the workshops were: Exile and Onembutsu in the World War II American Internment Camps; Yours in Nembutsu-A Card Making Workshop and a Chocolate Bliss Workshop (free samples!). Saturday started with an opening service with a special message from His Eminence Kojun Ohtani, Monshu Jodo Shinshu Hongwanji ha. It was quite an experience to have Sutra chanting and gatha singing in one large room with 1700 people singing as one! There were two keynote speakers on Saturday, Keiko Toro, an independent Buddhist scholar from Japan and Rev. Yukiko Motoyoshi, Resident Minister of the Buddhist Church of Stockton. Rev. Motoyoshi is a former Hawaii minister, serving at Mililani Hongwanji for many years before moving to the mainland. She delivered a heart-warming and funny story of her own path in the Nembutsu. It was an excellent presentation, although Hawaii people were especially happy to hear from Rev. Motoyoshi.

After lunch on Saturday, there were a variety of workshops. I attended a workshop titled “Connecting to Buddha through Apps” conducted by Rev. Matthew Hamasaki, a young American-born minister from the Buddhist Church of Sacramento. Claire and I (especially Claire) spent time on Friday and Saturday afternoon helping in the Hawaii booth in the marketplace selling coffee and other Hawaii goodies. After the workshops we had a little free time to nap, do a little shopping or meet in the bar. The evening banquet was highlighted by entertainment. Hawaii’s Buddhist Women’s Association did a hula to a Buddhist gatha, “I am link in Amida’s Golden Chain”.

Sunday was the last day of the convention. Each district (Canada, USA, South America, etc.) was represented by one person who gave a presentation to the entire assembly. Carol Valentine from Kauai was the presenter from Hawaii. We got to know Carol and Wayne from a Hongwanji-sponsored trip to the Honzan over 10 years ago. Our paths have crossed many times since. The good feelings from that trip-our first or second trip to Japan remain with us. Carol did a great job, as we knew she would.

The story of that convention, for me is that we are all travelers on the Jodo Shinshu path. During the conference we learned about the experience of other “fellow travelers”. We met old friends at the conference and enjoyed happy moments together. We met new people, like Rev. Matthew Hamasaki of the Buddhist Church of San Francisco. Namu Amida Butsu.

Hey, the World Buddhist Women’s Convention is held every 4 years. The next one will be held in Kyoto in 2023. If we’re able to travel, we plan to attend.

P. S. I’ll have to tell you about the Big Island later.

*“Be your own light”* Warren Tamamoto

## Mettabhavana Meditation

Amida Buddha  
surrounds all men  
and all forms of life  
with Infinite Love  
and Compassion.  
Particularly does  
he send forth  
loving thoughts to  
those in suffering  
and sorrow, those  
in doubt and  
ignorance, to  
those who are  
striving to attain  
Truth; and to those  
whose feet are  
standing close to  
the great change  
men call death,  
Amida Buddha  
sends forth oceans  
of Wisdom and  
Compassion.

**Namu Amida Butsu.**

### AIEA HONGWANJI HALL WEEKLY ACTIVITIES

Sunday	Dharma Service (temple)	9:00 a.m. - 10:00 a.m.
Sunday & Thursday	Hosha Work Days	8:30 a.m. - 11:30 a.m.
Monday - Wednesday, & Friday	Preschool Use	8:45 a.m. - 11:45 a.m.
Monday & Thursday	Kumon Class	2:00 p.m. - 5:30 p.m.
Monday & Wednesday	Zumba Class #1	6:00 p.m. - 7:00 p.m.
Mondays only	Zumba Class #2	7:30 p.m. - 8:30 p.m.
Tuesday & Thursday	Judo	5:30 p.m. - 8:30 p.m.
Tuesday & Thursday	Sanshin Class (classroom or Lotus)	7:00 p.m. - 9:00 p.m.
1st Thursdays	BWA Meeting (kitchen)	9:00 a.m. - 10:15 a.m.
Thursdays	BWA Craft Class	8:30 a.m. - 1:00 p.m.

=====

**Aiea Hongwanji  
Preschool and  
Kindergarten:**  
PH: 488-0404

**Lotus Adult Day  
Care Center:**  
PH: 486-5050

# Honpa Hongwanji Mission of Hawaii

## HEADQUARTERS UPDATE

1727 Pali Highway, Honolulu, Hawaii 96813

Phone: (808) 522-9200 Fax: (808) 522-9209

Web: [www.hongwanjihawaii.com](http://www.hongwanjihawaii.com) Email: [hqs@honpahi.org](mailto:hqs@honpahi.org)

Facebook: <https://www.facebook.com/pages/Honpa-Hongwanji-Mission-of-Hawaii/528681867268518>

Instagram: [https://www.instagram.com/honpahongwanjihawaii\\_official](https://www.instagram.com/honpahongwanjihawaii_official)



### BISHOP'S CORNER

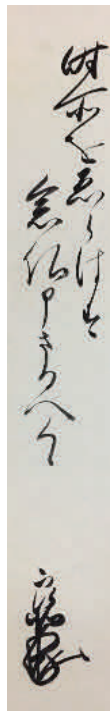
Bishop Eric Matsumoto

The month of September (usually, but not this year as the hot weather continues) is when we find respite from the scorching heat of Summer especially as we approach the Fall Equinox. Traditionally, together with the Spring Equinox, it is the time of the year which is said to be ideal for religious practice or training

when compared to harsh cold of winter and, again, the scorching heat of the summer months. Thus, in many other Buddhist denominations, it is seen as an ideal time for monks and nuns to engage in religious practice(s) that will lead to Enlightenment.

Every year at the time of the Equinoxes, a quote by our 13th Spiritual Leader, Ryonyo Shonin (1612-1662) comes to my mind. He said, "(If you have attained Shinjin or the Endowed Awakened Mind of True Entrusting,) without regard of time and place, recite the Nembutsu." It makes me appreciate the ease and simplicity of reciting the Nembutsu, in awareness, joy and gratitude of Buddha's Compassion, in which we do not have to worry about where we are and under what conditions like the seasons or circumstances we find ourselves in. It makes me appreciate the Great Wisdom and Compassion of Amida Buddha.

Shinran Shonin exclaimed, "The Universal Vow difficult to fathom is indeed a great vessel bearing us across the ocean (of pain and suffering) difficult to cross. The Unhindered Light is the sun of Wisdom dispersing our ignorance. (omit) ... the Auspicious Name (Namo Amida Butsu)...and that diamondlike shinjin so difficult to accept is true reality that sweeps away doubt and brings us to (the) attainment of enlightenment." Amida Buddha does not provide us with material wealth like a new car, a smartphone, a good job, not even good health and good luck, but Amida Buddha does promise to always be with us! This is Amida Buddha's promise that no matter what happens or wherever we are, the Buddha will always be with us and that as "Namo Amida Butsu" promises to lead us to Perfect Peace and Happiness, Enlightenment. Now this may not sound like very much, but believe me it is! Namo Amida Butsu is the most reliable and



the ultimate gift. It is a gift which includes everyone and embraces everything. It is what supports us in the here and now as we live day to day, and also into the future when we attain birth in the Pure Land (at the end of this finite life) and even beyond as we return from the Pure Land of Enlightenment to samsara as enlightened beings for the sake of leading others to Enlightenment.

As testament to the wondrous workings of Namo Amida Butsu in daily life, I would like to share two experiences which I had the good fortune of experiencing which exemplifies one aspect of the life of a person of Shinjin-Nembutsu. These two lay individuals were experiencing, health wise, a traumatic point in their lives. However, they calmly accepted their circumstances, but not at all in a defeatist way. They acknowledged their condition and circumstances as a reality, but did not struggle in anger or despair. As one person stated "I have befriended my illness and live together with it." "One should not complain, but be grateful to those helping me." "I am not afraid to die." Further, this person said, "Sensei, I just want to say 'Namo Amida Butsu' with you." How remarkable I thought. More often than not, people say "Please pray for me" "Please help me," but she was affirming her life just as it was including the fact that she was embraced by Great Compassion.

In the case of the other person, instead of asking for a blessing this person asked me if I could do him a favor. I was intrigued as to what he might request. "Sensei, would you allow me to read a Gobunsho or a Letter of Rennyō Shonin?" Without hesitation, I said, "Of course, you may." As I joined him in gassho, he beautifully from memory recited a letter of Rennyō Shonin. As he recited and after he was done, we both rejoiced in gratitude at the wondrous Compassion of Amida Buddha.

In both cases, I thought to myself, this is the power of "Namo Amida Butsu." The acceptance, the inner strength/courage, the peace, the guidance, the assurance, and the gratitude!

This is what happens when "Namo Amida Butsu" becomes a part of one's life and the Dharma becomes integrated into one's life. We are guided and assured by All-Inclusive Wisdom and All-Embracing Compassion (Amida Buddha). We are enabled to live and die with strength and courage from within for Amida Buddha as "Namo Amida Butsu" is always supporting and embracing us and we know that our life will joyously culminate with birth in the Pure Land of Enlightenment. This strength and courage, also, impacts all those around us too. This is the gift of Namo Amida Butsu which Shinran Shonin shared. Our life can be good, our life can be challenging, but one thing is for sure, Namo Amida Butsu is right here and always with us, now and forever!

At this time of the year at the Equinox when Nature is in balance, may we experience harmony in life too. Namu Amida Butsu.

### HHMH MINISTER'S LAY ASSISTANT RETREAT

Place: Buddhist Study Center

Date: October 11-13, 2019

Anyone who is interested and recommended by their Hawaii Kyodan minister mentor is welcome to apply.

Note: Anyone who is a member of a temple must be recommended by their resident minister.

Purpose: To review and enrich the knowledge of the participants in the rituals and traditions of the Nishi Hongwanji, General Buddhism and Shin Buddhism. All of the knowledge and skills that are associated with functioning as a Minister's Lay Assistant will be covered during the retreat. The retreat is an opportunity to learn and/or refresh one's skills and knowledge that is associated with the role of a Minister's Lay Assistant, but completion does not result in certification. The conditions of certification are presented in the document Shin Buddhist Ministry in Hawaii. This retreat can be taken many times so long as it remains meaningful and helpful to the participant. Completion does not imply an obligation to become a minister's assistant. For more information and registration, please contact Buddhist Study Center at 808- 973-6555.

### SOUL SHOP SUICIDE PREVENTION TRAINING

The statewide Suicide Prevention Training will be held on October 18-19, 2019 at Saint Louis School (3142 Waiālae Avenue, Honolulu, HI 96816). Live webinar will be available at Mililani Hongwanji Mission.

Soul Shop is a national movement focused on helping communities and faith leaders develop skills and strategies for the prevention of suicide.

#### ■Soul Shop for Youth Leaders

Date & Time: Friday, October 18, 2019, 6:00pm to 9:00pm

Registration Fee: \$10\* (includes workbook)

Soul Shop™ for Youth Leaders is a half-day, interfaith training designed specifically to equip leaders and educators to minister to youth who are impacted by suicidal desperation. Special attention is focused on youth specific issues of impulsivity, contagion, and confidentiality. It includes how to recognize warning signs, how to engage in life-saving conversations, and how to keep youth safe.

#### ■Soul Shop for Community and Interfaith Leaders, Clergy, and Mental Health Professionals

Date & Time: Saturday, October 19, 2019, 9:00am to 4:00pm

Registration Fee: \$20\* (includes workbook and bento lunch)

Soul Shop™ is a one-day training to equip community leaders, interfaith leaders, and mental health professionals, including clergy, volunteers, and those who are passionate about doing ministry, to help those who are desperate due to any type of experience with suicide. The training includes the creation of worship resource, training in suicide awareness and basic conversation skills, and the invitation to those who have been suicidal in the past to share their stories.

This event will be presented by Honpa Hongwanji Mission of Hawaii together with BDK Hawaii, Chaminade University-BDK Hawaii Rev. Fujitani Interfaith Program and Samaritan

Counseling Center Hawaii. For more information and registration, please visit the following links:

Suicide Prevention Training:

<https://soulshophi19.eventbrite.com>

Suicide Prevention Training Webinars:

<https://soulshophi19webinars.eventbrite.com>

### RSG EDUCATIONAL PROGRAM

Ryukoku Sogo Gakuen (RSG) held the Educational Program for International Understanding at Pacific Buddhist Academy (PBA) from August 1 - September 12. This is the second time for RSG and PBA to hold this program. The object of this program was to nurture individuals with an international orientation founded on Buddhist values and perspectives through deepening their mutual understanding of differing



cultures and societies. 21 students from 13 RSG high schools in Japan had a homestay in Hawaii and attended PBA with the PBA students. The closing service of this program was held at Honpa Hongwanji Hawaii Betsuin.

### HONGWANJI SANYOKAI VISIT

Hongwanji Sanyokai (Hongwanji Councilor Association) came to Hawaii from Japan for their study from September 13-16, 2019. Since Honpa Hongwanji Mission of Hawaii marked its 130th Anniversary this year, a total of 6 members visited temples such as Moilili Hongwanji Mission, Honpa Hongwanji Hawaii Betsuin and Waipahu Hongwanji, and Pacific Buddhist Academy. They developed their knowledge and understanding about the history of the propagation in Hawaii.





**Beautification Day  
Sep. 22, 2019  
Thank you so much for your  
hard work!**

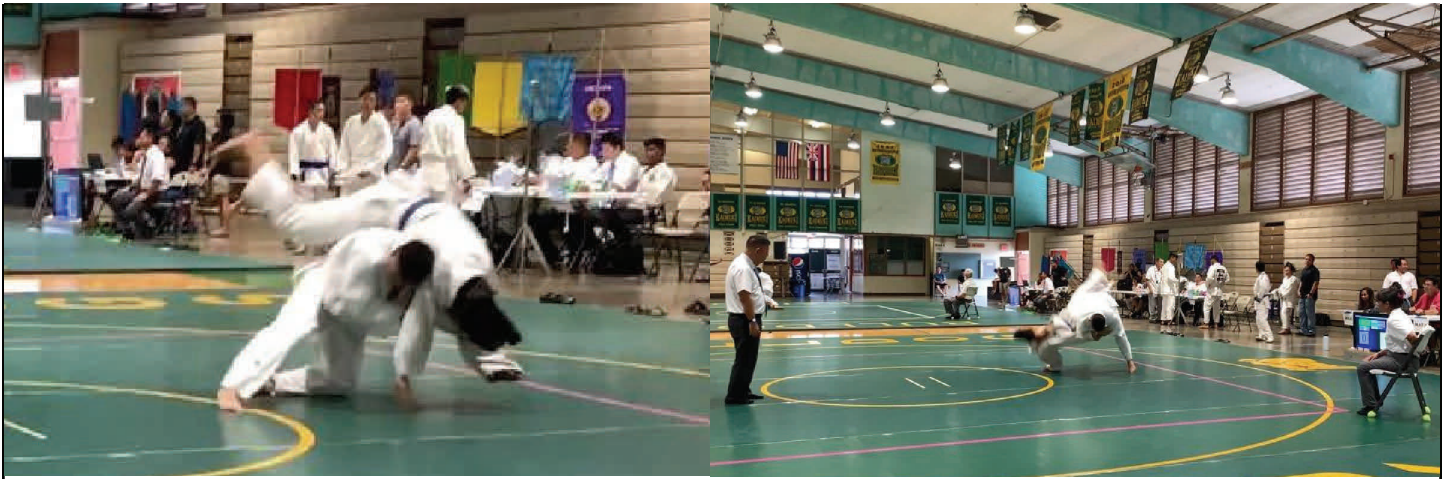


  
**56th Honpa Hongwanji Lay  
Association Convention  
Sep. 13-15, Big Island**



**Preschoolers and  
LADCC participants  
enjoy  
performance  
by  
Honolulu  
Theatre  
for Youth**





Honpa Hongwanji's 60th Judo Federation State Championships at Kaimuki High School Gymnasium  
August 31-September 1, 2019

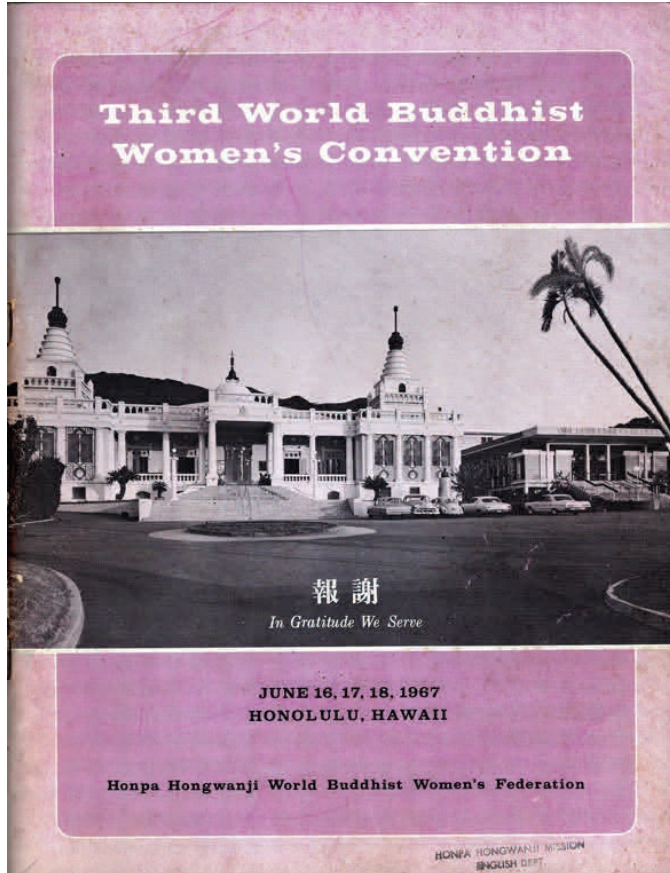


Rev. Shawn shared about "Peace" during Preschool Temple Visitation

## Headquarters Update (Continued from page 5)

### FROM THE ARCHIVES COMMITTEE

In recognition of the recent World Buddhist Women's Convention in San Francisco, the HHMH Archives Committee provides below the text of Lady Ohtani's message in the 1967 World BWA Convention booklet. You may contact the Archives Committee at [archiveschair@honpahi.org](mailto:archiveschair@honpahi.org). - David Acheson



Lady Yoshiko Ohtani's Message in the 1967 Booklet

I am extremely happy to see the Third World Buddhist Women's Convention become a reality. This Convention, under the combined auspices of the Hawaii Buddhist Women's Association and the Hongwanji Kyodan, represents the coming together in one assembly of many members of Buddhist women's associations from various parts of the world, who come implemented with the year's slogan, "Grateful Service for a Better World."

As I recall, the Second World Buddhist Women's Convention, held in New York two years ago, stipulated an annual Dana Day and unanimously resolved to support observance of this Day. I



have been deeply moved and gratified to learn that observance of this Day is now firmly established and is being widely practiced throughout the world by tens of thousands of our members on the same day in the same generous manner. Moreover, I am very much impressed by the fact that this assembly will now advance towards discussions bearing in mind the theme it has adopted for this Convention: "With the intent of realizing a better world, let us offer our services."

During the previous convention also, a hope was expressed that we have a song to be sung in unison by all participants. As a result, two songs, entitled "Kokoro Yutaka-ni" and "Doko-ni-mo Hikari-ga," have been composed, and I am anxiously looking forward to hearing them sung with much enthusiasm at this time.

May I voice my sincere wish that all you members participating in this happy occasion take this opportunity to listen to the words of the Buddha and that having fully entrusted all in the Compassionate Buddha you make every effort to lead your lives as mothers of the Nembutsu faith.

Before closing, I should like to express my sincere appreciation and gratitude to the members of the Hawaii Buddhist Women's Association and the Hongwanji Kyodan for their untiring efforts.

### 2019-2020 Social Concerns Fund Drive

We celebrate gratitude in the month of November. The Thanksgiving holiday and the Eitaikyo observance are reminders of the countless blessings in our lives and how we live deeply connected to the world around us. It is in this spirit of gratitude that we begin our Annual Social Concerns Fund Drive. The fund drive will be from November, 2019 through August, 2020 and we request temples to submit their collected donations in September 2020.

Through the generous contributions of Sangha members, the Honpa Hongwanji Mission of Hawaii is able to support worthy organizations and programs with funding to continue their work in our community. Your support also allows us to provide compassionate action during times of disaster and the ability to respond to social issues affecting our community.

Because of your commitment to promoting the Buddhist values of compassion and loving kindness, we are able to lend our support to such organizations as the Hawaii Community Foundation, Project Dana, Mana Olana Shelter, Family Promise Hawaii, Hawaii People's Fund, A Cup of Cold Water, Hawaii, and various food banks on each island.

The Golden Chain Grant program was established to promote compassionate action through innovative community service projects. Your generosity directly helps those in need and promotes a more humane world.

Please make check payable to **AIEA HONGWANJI MISSION**. The suggested donation is the cost of just one meal per person.

Your kokua is greatly appreciated. Mahalo!



## THANK YOU FOR YOUR GENEROUS OBON DONATIONS

The JIKO will publish names and amounts of donations made for services or projects. If you do not wish to have your name published, please indicate, 'No Publish', on the note line of your check. Your donation will be marked 'Generous Member or Anonymous'. If you wish to have your name published without the dollar amount, please indicate with the following note: 'No \$'.

\$500 Tokuno Family (IMO Kenji, Nobue, & Alvin)  
Lori Ideta

\$450 From Family of Leighton Nuibe

\$300 Earl Shimabukuro

\$200 Albert Hirano  
Gary Funasaki  
Wayne Kitashima (IMO Shigeru & Yayoe  
Kitashima)

\$100 Burt Okura  
Boyd Marumoto  
Sharlene Nakamura (IMO Paul Nakamura, Jr.)  
Kenneth Kimura (IMO June Kimura)  
Julie Aquino  
Hisako Okihiro  
Steven Hamada  
Charlene & Harold Asato  
Richard Matsunaga, Jr.  
Yukie Haas  
D. K. F. Okawa

\$50 Joyce Asato  
Taketo Okamitsu  
Blanche Kinoshita  
Sally Ohira  
Earl & Cindy Asato  
Neil Furukawa  
Frank & Helen Takenouchi  
Susan Morishige  
Alice Suma

\$50 Alice Tasaki  
Allan & Ann Tomisato  
Lawrence & Lynnette Onaka  
Doreen Takata  
Grace Marumoto  
Mark & Arlene Sunada

\$30 Joseph Kuroda  
Masaru Oshiro

\$25 Alice Isobe  
Onishi Family Trust  
Glenn Nishimoto  
Myles Mishima  
Carol K. Yamamoto  
Neal Okimoto  
Alvah Kondo  
Lorraine Wagai  
Paul M. Mitsui  
Masao Aihara  
Grace Morikawa  
Jay Kamai  
Ernest & Elaine Yamanoha  
Sue Higuchi  
Reverend Kazunori Takahashi  
Diane Shimizu  
Merle Sato  
Melvin Hayase

\$20 Wayne Nuibe  
Elaine Kutaka  
Hazel Ginoza  
Dean Sato  
Leslie Kuromoto  
Joyce Matsumoto  
Eric & Tamayo Matsumoto  
Claire Masaki  
Charlotte Tomoyasu

\$15 Sarah Miyasaki

\$10 Thelma Kawaguchi

*Note: All Donations listed here in this month's JIKO for Obon were recorded prior to August 2, 2019.*

*Thank  
You to  
All of our  
Generous  
Donors!*

## HI-5 RECYCLABLE DONATIONS

- If you would like to be recognized for your donation, please include your name.
- We are not able to recycle detergent bottles, milk bottles, ensure bottles. We can only recycle Hi-5 items. Please dispose of other items in your own blue bin.
- Please note—plastic drink bottles cannot be redeemed without the Hi-5 label. If label is detached, please roll it up and stick it in the bottle.
- *Thank you for your participation and continued support.* To improve the efficiency of our recycling program, could you please dispose of all caps from the bottles and do not include garbage and other non-Hi-5 items. Thank you for your efforts to keep Hawaii and Aiea Hongwanji GREEN.

# Major Yearly Memorial Service Schedule

For The Year 2019

2018-1st year

2017-3rd year\*

2013-7th year

2007-13th year

2003-17th year

1995-25th year

1987-33rd year

1970-50th year

\* from the 2nd

anniversary,

please follow the Japanese custom

of holding the service the year ahead.

## Nokotsudo (Columbarium)

If you would like to visit the Nokotsudo, please call the residence at 488-5685 or the office at 487-2626 at least two days in advance so that arrangements can be made to open the Nokotsudo for you. The best days to visit the Nokotsudo are Thursday and Sunday mornings.

## Family Memorial Service

In the Japanese Buddhist tradition, families hold memorial services (Nen-ki Hoyo) in memory of our loved ones, and to express our gratitude for Amida Buddha's Infinite Light.

The Buddha's Wisdom and Compassion embrace our loved ones in the land of peace and happiness. May we also remember Amida's embrace on our lives as we remember those who have departed.

If your family would like to arrange a memorial service for your loved one, please call Rev. Yagi at 488-5685. (please leave a message if no one is available). You may schedule the service either before or after the memorial date. The ideal time is when as many family members as possible will attend.

### October 2019

Richard Megumi Matsunaga	13th
Iwao Kojima	17th
Greg Shuji Morishima	17th
Hiroshi Tateishi	17th
Seiji Arakaki	25th
Edwin Ichiro Kakimoto	25th
Ayako Taniguchi	25th
Thelma Tsuyako Yamaguchi	25th
Noboru Suzukawa	50th
Akira Teramoto	50th
Hama Yoshida	50th

### November 2019

Harriet Harue Zakahi	1st
Mildred Mutsuko Nomura	3rd
Mitsuo Hara	13th
Todd Etsuo Maeda	13th
Craig Tatsuo Kawano	17th
Yoshihiko Nakagawa	17th
Toshio Nakahara	17th
Hide Nishinaga	25th



We apologize if we have inadvertently made an error in printing the name of your loved one, or the date of memorial. Please inform the office of any errors at 487-2626 so that we may correct our records.

We appreciate your assistance in updating our memorial records and contact information when you call in for a Memorial Service. Thank you.

### **1st Annual Rev. Dr. Alfred Bloom Memorial Lecture**

*"Encountering Amida's Vow: Reflections on my Teacher"*

Speaker: Rev. Richard Tennes

Date: Saturday, November 16, 2019 Time: 9:00 am - 12:00 pm

Place: Windward Buddhist Temple 268-A Kuulei Road Kailua, HI 96734

Registration Fee: \$10.00 To Register: Call - (808) 262-4560 or Email -

kailuahongwanji@gmail.com Website: windwardbuddhisttemple.org

Sponsored by Windward Buddhist Temple (aka Kailua Hongwanji Mission)



### **PROJECT DANA**

Volunteers are needed to assist with transportation for doctor and dentist visits, shopping, and respite visits. for the frail, elderly and disabled living at home in the area from Waimalu to Salt Lake. A Big Thank You to Frank and Helen Takenouchi for their ongoing work with Project Dana.

## Aiea Hongwanji Judo Club

Members from the Aiea Hongwanji Judo Club recently took part in a two-day event to commemorate the Honpa Hongwanji's 60th Judo Federation State Championship Competitions held at Kaimuki High School gymnasium on August 31st and September 1, 2019. This event marked the largest gathering of dojos across the State whose traditions are deeply rooted in the Buddhist spiritual traditions founded by Shinran Shonin over 780 years ago.

Characteristics of Buddhist Judo prepares each participant to embrace and value their training in preparation to live their lives in peaceful and harmonious ways. ***"It is about developing a sound mind and strong body which contributes to the well-being of both the individual and society."*** - Bishop Eric Matsumoto

AHJC entered 6 competitors during the 60th Annual Honpa Hongwanji Judo Federation State Championships, they were Sensei Josh Gima, Shainne Nishimura, Eynne Nishimura, Isiez Gutierrez, Ashlee Sakamoto, and Kai Tanji-Seki. All fought their hearts out and represented Aiea Hongwanji very well.

Congratulations to Sensei Josh, Eynne, and Ashlee who placed First. Job well done to Kai and Isiez who took Second place. Regardless of a win or a loss, every member put their best foot forward, and took in as much as they could...learning from this great experience.

Thank you to everyone for your continued support. It is always our goal to represent and uphold the values of Aiea Hongwanji to the best of our abilities.

Mahalo,

Sensei Dustin Iwabuchi

Aiea Hongwanji Judo Club - Head Instructor

***Note: The Aiea Hongwanji Judo Club meets in the hall every Tuesday and Thursday from 5:30 - 8:30 pm.***

## BWA News

Aloha and look, it will be Halloween already! Please join us at the Luau fundraiser on Saturday, October 26....and treat us with your favorite dessert! We really appreciate those of you who take the time to make all the goodies and help with the preparation for this event. Special thanks to Chef Ito for his planning and leadership.

It's election time, so put in your nominations for BWA officers for 2020-22. We thank the current officers, Janice I, Arlene S, Susan M., Elaine K., Charlene A., for their time and hard work.

Thanks for the flower and greenery donations each week and to Helen T, Elaine K., Sally O., and Thelma K, for arranging them.

A special thank you to all who helped at our Beautification Day on Sep 22. We really appreciate your time and energy to clean and care for the Social Hall, Preschool and landscaping. And also a big thank you to the ladies who prepared the delicious refreshments and lunch.

With Gassho,

Arlene Sunada

## Senior YBA News

At our September 9<sup>th</sup> meeting, we created a new committee for Rules and Policies. Chair Richard and members Larry, Lynn, Gayle, and Charlene will convene to discuss this important matter and will develop guidelines for our Senior YBA.

October 7<sup>th</sup> (Monday) is our next Senior YBA meeting. We will meet in the AHM office at 7:30 p.m. On the Agenda is Rules and Policies. We will also discuss September 29<sup>th</sup> which is a 5<sup>th</sup> Sunday and is the date of AHM's O-Higan service; we are in charge of refreshments and lunch. We will also plan our October pot luck dinner. New Business includes our upcoming service project which is the Eitaikyo Service in November.

Please make every effort to attend the meeting. We would like to hear from you on all matters.

Thank you and stay healthy!!

In Gassho,

George Zakahi

## AHM Office Volunteers

In an effort to keep our office open to the public, we are continuously seeking volunteers. If you are able to assist us in performing light office duties such as answering the phone, taking messages, and filing, please call us at 487-2626.

## GOLDEN CHAIN OF LOVE

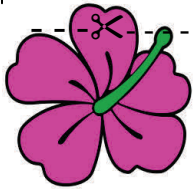
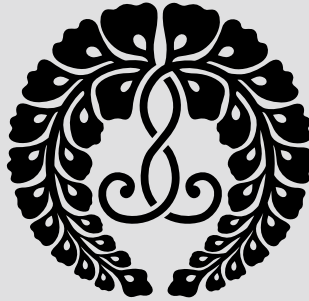
I am a link in  
Amida Buddha's  
Golden Chain of  
Love that  
stretches around  
the world. I must  
keep my link  
bright and  
strong. I will try  
to be kind and  
Gentle to every  
living thing and  
protect all who  
are weaker than  
myself. I will try  
to think pure and  
beautiful  
thoughts, to say  
pure and  
beautiful words  
and to do pure  
and beautiful  
deeds, knowing  
on what I do  
now depends  
not only on my  
happiness or  
unhappiness but  
also that of  
others. May  
every link In  
Amida Buddha's  
Golden Chain of  
Love become  
bright and  
strong and may  
we all attain  
Perfect Peace.  
Namo Amida  
Butsu.

Aiea Hongwanji Mission  
99-186 Puakala Street  
Aiea, Hawaii 96701

Change Service Requested

Non-Profit Org.  
U. S. Postage  
Paid  
Permit No. 42

10/19



-----Please cut this portion and return with your check-----

### 18TH ANNUAL HAWAIIAN DINNER at AIEA HONGWANJI MISSION

Saturday, October 26, 2019

5:00 p.m Social Hour; 6:00 p.m. Dinner

	Pork Lau Lau	Chicken Lau Lau	***	
# of Regular Plates			X \$12.00 each	\$
#of Children (7-12yrs.)			X \$6.00 each	\$
#of Children (under 7)			Free	- 0 -
<b>Total</b>				\$

Dine-in Only

\*\*\* Donation (No Refunds)

Name: \_\_\_\_\_ Phone: \_\_\_\_\_

Address: \_\_\_\_\_

Make checks payable to **Aiea Hongwanji Mission** at:  
**99-186 Puakala Street, Aiea, HI 96701 (PHONE: 487-2626)**

**DEADLINE** for early registration is OCTOBER 6th (limited to first 250 orders)

**After Oct. 6th, Regular Plates are \$15 each and Children (7-12 yrs) plates are \$7 each.**

*We welcome dessert donations and your kokua to make this an enjoyable and memorable event!  
Food preparation will begin at 5:30 pm on Friday, October 25, 2019 (to wrap laulaus).*

***Mahalo for your continued support!***

October 2019 JIKO